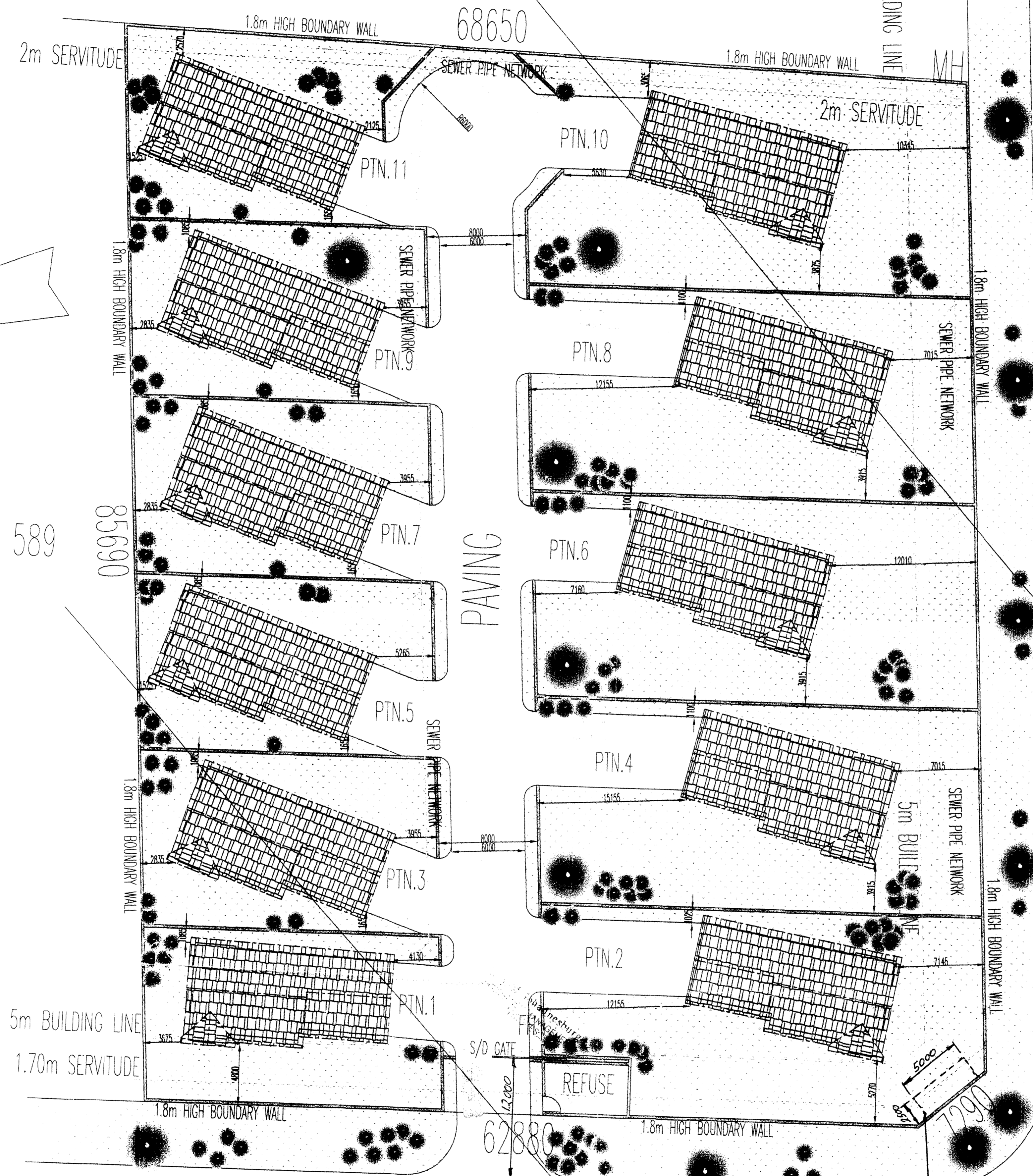


PTN. 276 ROODEPOORT No. 237-1Q



STAND 589

85690

PAVING

SOUTH ROAD
78790
1755

VA
LIEMAN ROAD

PLANTING LEGENT

- BIG TREE EVERGREEN
- MEDIUM TREE EVERGREEN
- SMALL TREE EVERGREEN
- GROUND COVER

Johannesburg City Parks
Greenery Conserved Yours.
Supported / NOT Supported
Comments: *All according to L.C.*
Signature: *[Signature]* Date: 13/11/2006

CITY OF JOHANNESBURG
ENVIRONMENTAL HEALTH - REGION 4
APPROVED: *[Signature]*
DATE: 4/12/2006
SIGNATURE: *[Signature]*

Johannesburg Water (Pty) Ltd
Acceptable for Construction Purposes
Subject to the following conditions:
Signature: *[Signature]* Date: *[Date]*

TRANSPORTATION
E No. 62.4117
No objection
E No. 62.4117.6

APPROVED
13 NOV 2006
RON'S TRASH THE FUTURE

SCHEDULE OF RIGHTS

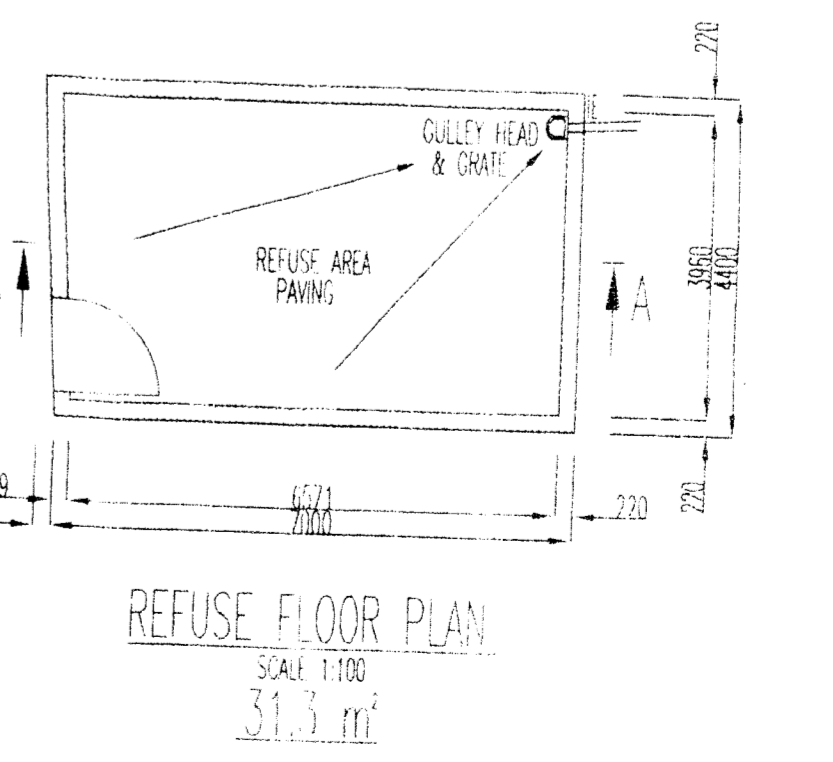
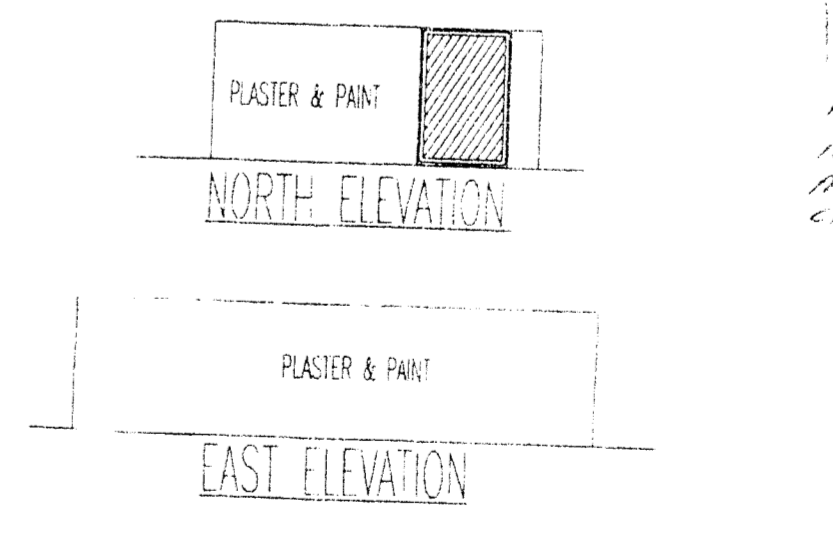
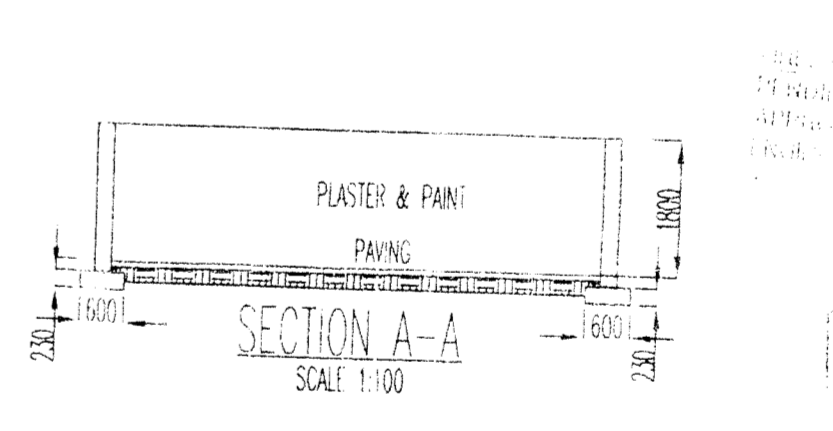
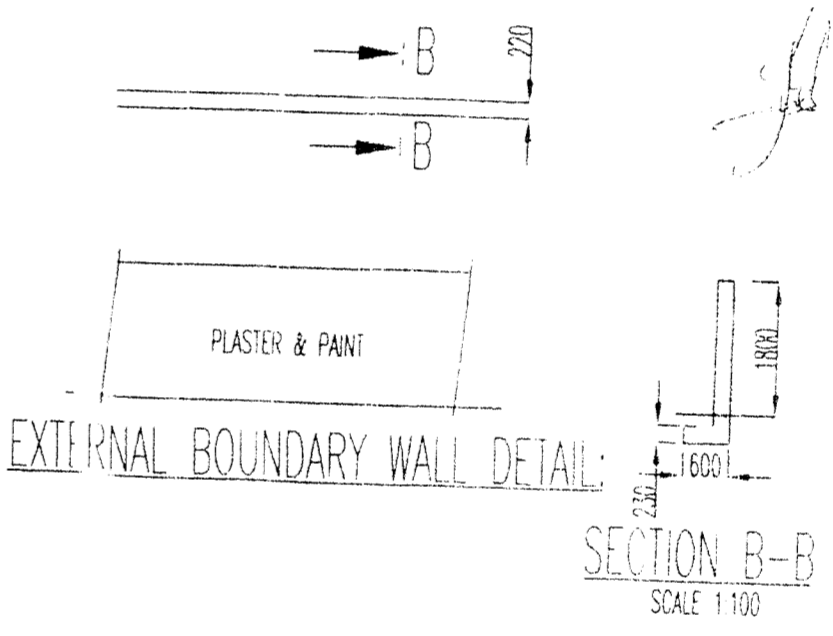
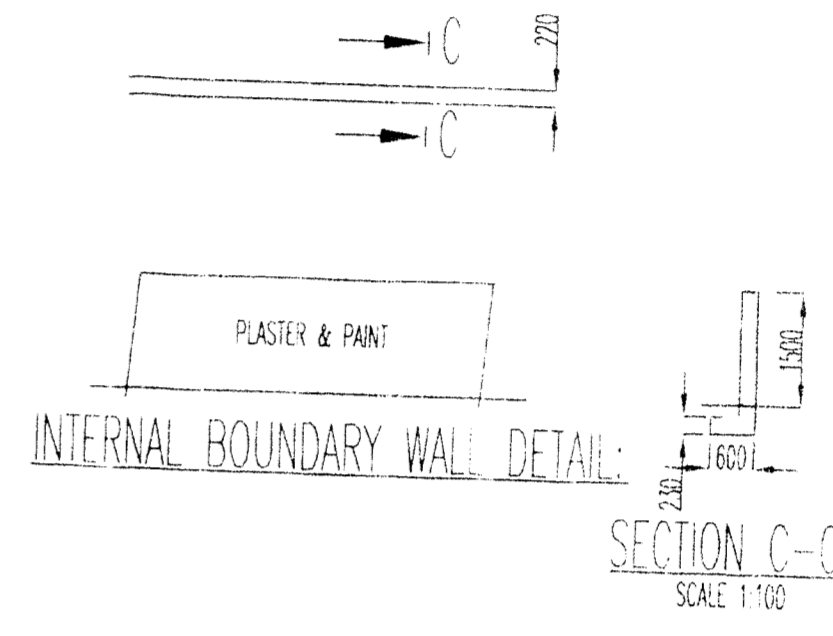
	REQUIRED:	PROVIDED:
SITE AREA:	= 5780.0 m ²	
USE ZONE:	= RES2	
DENSITY ZONE:	= 20 units/ha (11.56)	= 11 units
HEIGHT ZONE:	= 2 STOREYS	= 1 STOREYS
F.A.R.:	= 2880.0 m ² (0.5)	= 1166.0 m ² (0.201)
COVERAGE:	= 1734.0 m ² (30%)	= 1166.0 m ² (20.17%)
BUILDING LINES:	5 m ALONG STREET FRONTAGE	
PARKING ZONE:		
REQUIREMENT:	1 COV. BAY & 1 OPEN PER UNIT	
TOTAL REQUIRED:	11 COV. & 11 OPEN PARKING BAYS	
PROVIDED:	44 PARKING BAYS	

HENNING VAN ASWEGEN
CELL: 083 274121

SITE DEVELOPMENT PLAN
SITE PLAN
1:200
STAND 589
GROBLERSPARK EXT.47

REFUSE NOTES:
REFUSE PAVED & LAID TO A FALL
COLD WATER TAPL OVER 1.0 x 1.0m
GULLEY TO BE RAGED 120mm
ALL ACCESS GATES TO SWING INSIDE
& BE 1200mm WIDE MIN
AREA 31.3m²

STORMWATER NOTES:
STORMWATER TO ENGINEERS DETAIL



CITY POWER
2006-05-17

LIMITED CURRENT
IS AVAILABLE ON EXISTING
PHI UTILITIES. PLEASE CONTACT
CITY POWER BEFORE PROCEEDING